



---

---

---

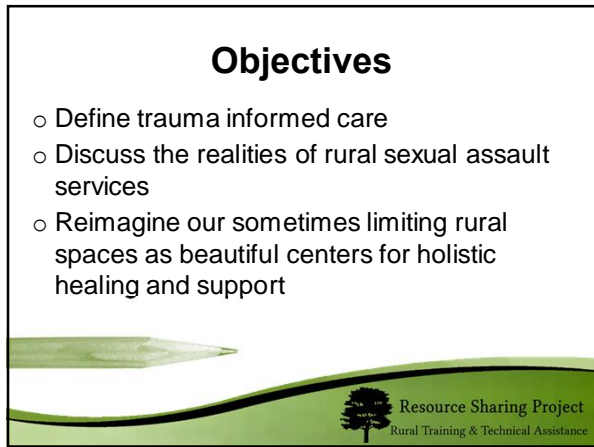
---

---

---

---

---



---

---

---

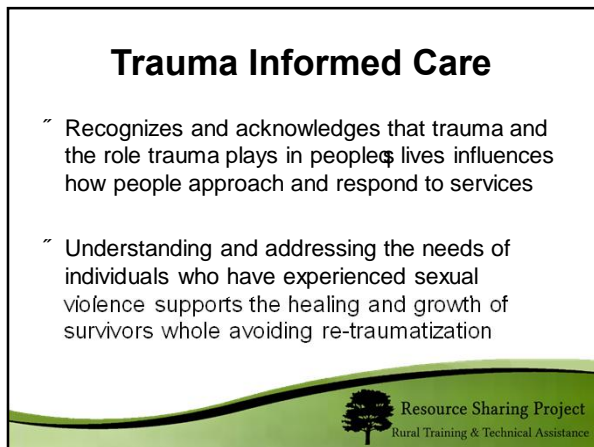
---

---

---

---

---



---

---

---

---

---

---

---

---

### Trauma Informed Care

Core Principles:

- Safety
- Trust
- Choice
- Collaboration
- Empowerment
- Cultural Competence



Resource Sharing Project  
Rural Training & Technical Assistance

---

---

---

---

---


---

---

---

### Trauma Informed Care

While it is not possible to eliminate all environmental cues, it is important that sexual assault services programs create environments where survivors feel safe.



-Building Cultures of Care

Resource Sharing Project  
Rural Training & Technical Assistance

---

---

---

---

---


---

---

---

### Rural Reality

- ~ Large service areas
- ~ Few staff
- ~ Limited transportation
- ~ Distrust of institutions
- ~ Cultural norms of privacy, self-sufficiency



Resource Sharing Project  
Rural Training & Technical Assistance

---

---

---

---

---

---

---

---



**You are not alone**

---

---

---

---

---

---

---

---



**What do people love about rural communities?**

---

---

---

---

---

---

---

---

**Trauma Informed Care**

Core Principles

- Safety
- Trust
- Choice
- Collaboration
- Empowerment
- Cultural Competence



 Resource Sharing Project  
Rural Training & Technical Assistance

---

---

---

---

---

---

---

---



---

---

---

---

---

---

---

---



---

---

---

---

---

---

---

---



---

---

---

---

---

---

---

---



---

---

---

---

---

---

---

---



---

---

---

---

---

---

---

---



---

---

---

---

---


---

---

---

1. What is something you are already doing that you want to keep doing?

2. What is something new you learned today that you are excited to start doing?



Resource Sharing Project  
Rural Training & Technical Assistance

---

---

---

---

---

---

---

---

# Questions?



Resource Sharing Project  
Rural Training & Technical Assistance

---

---

---

---

---


---

---

---

## Thank you, OVW!

*This project was supported by Grant No. 2008-TA-AX-K043 awarded by the Office on Violence Against Women, U.S. Department of Justice. The opinions, findings, conclusions, and recommendations expressed in this program are those of the author and do not necessarily reflect the views of the Department of Justice, Office on Violence Against Women.*



Resource Sharing Project  
Rural Training & Technical Assistance

---

---

---

---

---

---

---

---

**Thank you!**



Leah Green, RSP Rural TA  
Specialist  
515-244-7424  
[Leah@iowacasa.org](mailto:Leah@iowacasa.org)  
[www.resourcesharingproject.org](http://www.resourcesharingproject.org)



Resource Sharing Project  
Rural Training & Technical Assistance

---

---

---

---

---

---

---

---